

314

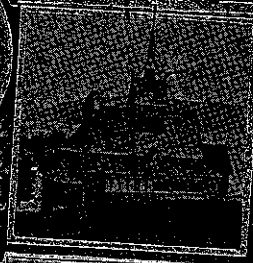


BALESTRAND HOTEL

N. J. RENDEDALE PROPRIETOR



TELEPHONE CONNECTION
TELEGRAPHIC ADDRESS
BALESTRAND, BALHOLM



CHURCH OF REVENGE SH. CHURCH

Hotel "Balestrand"

BALHOLM · SOGN

FIRST CLASS SELECT HOTEL. TWO MINUTES' WALK FROM
THE LANDING PIER

Beautifully situated on the Fjord. All Comforts; excellent
Cuisine and Wines

BEST SANITARY ARRANGEMENTS

BATHS AND SEA-BATHING

Specially patronised by Norwegians, English, Germans,
French, and Americans

BRIGHT, COMFORTABLE ROOMS

67 BEDS

STRICT CLEANLINESS

CAREFUL COOKING

PERSONAL SUPERVISION

Thoroughly recommended for short or long visits, as it
is one of the best centres for Excursions by

STEAMERS, MOTOR BOATS, SAILING AND ROWING BOATS

GOOD FISHING. MODERATE PRICES

TELEPHONE CONNECTION. TELEGRAPHIC ADDRESS: BALESTRAND, BALHOLM

Proprietor: N. J. RENDEDALE

SHORT EXCURSIONS

BALHOLM is so situated that it is the centre for excursions, and the tourist cannot fail to be delighted with the beautiful surroundings.

The promenade is along the coast line to King Bêle's Tree on to the Hygea (a "rest and be thankful"); further along to Kvinnefos, a beautiful little waterfall.

The road along by the "Esse Fjord" is also another favourite, especially when the Naval Manœuvres are to be seen.

The short trip over to Tjugum should never be missed.

Sail to Fjaerland to see the Great Glaciers, "Bogumbræ" and "Suphellebræ."

MUNDAL'S Hotel is good, and well adapted for the tourist.

Sail to Vik, where there are two most interesting old churches to be seen. The Hoppstad Church is a Stav Church built in the twelfth century. The Hove Church dates from the Viking age, and is built of stone.

The hotel proprietor, if asked, gives the tourist full information about any trip most willingly, and can make all arrangements for guides and boats, if wanted, for any trip far or near.

A trip for a couple of days to be recommended, and which will give the voyager a good impression of the inner part of the Sognefjord and its branches, is the following:

From Balestrand to Sogndal by steamer (5 times a week), some 4 hours' sailing. From Sogndal, driving or walking to Solvorn, some 16 kilometres. The splendid road passing the well-known salmon-river, the "Aarøen," and leading through pine-forests alongside the rocky and wild river with its many waterfalls ("Helvedesfoss" and "Futespranget") to the Hafslo village, situated on the one side of the beautiful Hafslo lake with its splendid trout-fishing. (Permission to fish is liberally given by the farmers, if asked.) A boat-trip on the beautiful lake, with its small islands and framed by pine-forests, is much to be recommended. Hafslo is an inland place some 600 Norwegian feet above the sea. Good hotel at Hillestad. From Hafslo (Hillestad) down hill to Solvorn on the Lysterfjord, 5 km. Across the fjord Urnes with the oldest Stav Church in Norway. From Solvorn back to Balestrand by steamer.

Instead of going from Hafslo to Solvorn one may go from Hafslo up to the Veitestrands lake (a little higher than the Hafslo lake). The lake has very wild surroundings, is 14 kilometres long, and very deep. There is a motor-boat running twice a day (once in each direction). From the end of the lake one can walk over the glacier (guide must be had) to the Suphelledalen on the Fjaerlandsfjord—not far from Balestrand. Bad road, and rather tiring walking; but very interesting tour.

The described route may of course be taken quite as well (perhaps even better) *vice versa* (from Balestrand to Fjaerland over the glacier to Veitestranden, and from there to Hafslo and Sogndal, and back to Balestrand by steamer).

There are hotels at Sogndal and Solvorn, but very small ones and not up-to-date as tourist hotels. The hotel at Hillestad is also a small one.

Instead of going from Hafslo to Solvorn one may also go from Hafslo to Marifjæren (8 kilometres) down hill, and there take the steamer at Marifjæren back. At Marifjæren there is a good small hotel.

None of the hotels in this route is a special tourist hotel, like the hotels at Balestrand.

MOUNTAIN CLIMBING

MONKEGGEN, 4235 Norwegian feet above the sea
6 hours there and back

TJUGUMSTOTEN, . . . 3570 " " "
6 hours there and back

KJEIPEN, 4500 " " "
10 hours there and back

SEA BATHS—SEA FISHING—BOAT TRIPS

BALESTRAND is situated on the beautiful SOGNEFJORD (80 kilometres up the fjord). It can be reached from BERGEN by steamer in nine hours. There are quick-running steamers from Bergen twice a week, and ordinary steamers thrice a week—thus in all, steamers from Bergen five times a week. Post connection every day.

Balestrand can also be reached by leaving Bergen in early morning by RAILWAY to MYRDALEN STATION, situated on the Bergen-Christiania railway, on the "höifjeld," high up in the mountains, some 2740 Norwegian feet above sea-level. From MYRDALEN driving or walking 18 kilometres down the beautiful FLAAMS-VALLEY to FRETHEIM (Flaam), and from thence some hours by steamer to BALESTRAND, arriving there at night. From Myrdalen there are magnificent views amongst the mountains down the Flaams-valley—a very pretty route—one of the finest in Norway, and the tourist should stay two days at Vatnahulsen Hotel.

FROM CHRISTIANIA Balestrand can also be reached IN ONE DAY, leaving Christiania in the early morning with the Bergen railway to MYRDALEN STATION, and from there the route just described.

An English mile (statute mile) is equal to 1·609 kilometres.

An English foot = 0·3047 metre.

A Norwegian foot = 0·3137 metre.

One kilometre (km.) = 1000 metres.

One yard = 0·914 metre.

Guide

TO

"Balestrand" Balholm

SOGN, NORWAY.

*"Nature's sweet self with
Stately art combined
To charm the eye and
Cultivate the mind."*

Printed by the
Nasjonalbiblioteket



Nasjonalbiblioteket
Depotbiblioteket

*Illustrations produced by the kind permission
of Mr. I. Hayley. Also by Mr. W. S.
Bartholomew, Edinburgh.*

914

94.852

694

124

EDINBURGH:

PRINTED BY JAMES SKINNER AND COMPANY.

BALESTRAND:

A SUMMER RESORT.



BALESTRAND, *BALHOLM*, is situated on the beautiful Sognefjord, a great Summer Resort. It can be reached from Bergen by steamer in nine hours, and it is one of the finest sails to be had in Norway. There are quick running steamers twice a week and ordinary steamers three times a week—thus in all, steamers from Bergen five times a week. Post connection always.

The steamers leave Bergen in the morning (8 o'clock) and sail through very narrow sounds and groups of small beautiful islands northwards in the "Skjærgaard," along the most picturesque coast up to *Skjærgehavn* (about three hours sail from Bergen). Here the Sognefjord commences.

The next place at which the quick steamers call at is *Vadheim*. (From *Skjærgehavn* to *Vadheim* about three and a half hours' sail.)

From *Vadheim* the steamer sails direct to *Balestrand* in about two and a half hours.

Balestrand can also be reached by leaving Bergen in early morning by railway to Myrdalen Station, situated on the Bergen-Christianiana Railway, on the "Höifjeld," high up

in beautiful mountains, about 2740 feet (Norwegian) above sea level.

The railway runs first through the villa quarter outside Bergen with many beautiful places; amongst them is *Mr. Christian Michelsen's* residence, who was the Norwegian Premier in 1905, when the union with Sweden was declared ended by the Norwegian Government; also the residence of the late famous Norwegian composer, *Edvard Greig*.

In three hours the train reaches *Voss*, a smiling and open broad inland place with splendid Hotels. The train, which has all the way been running on a moderate incline, on leaving Voss commences an uphill journey to the mountains ("höifjeld"). It passes the training places of the Bergen Foot Brigade. The drilling of the soldiers may frequently be seen from the train.

From Voss there is a good driving road to *Gudvangen* on the Sognefjord, passing the excellent hotel "*Stalheim*," with splendid view. From *Stalheim* the road goes down hill down the *Nærödal*. *Stalheim* lies 1200 feet high, and the road goes down in zigzag in sixteen windings. Two waterfalls are seen, one on each side. The windings are *very steep*, and are called the *Stalheimskleven*. From thence the road goes slowly down hill to *Gudvangen*. This route was very much used before the railway was finished. From Voss to *Gudvangen* is 48 kilometres driving.

There is also from Voss a good driving road to *Eide* (30 kilometres), and to *Ulvik* (44 kilometres), both situated on the beautiful *Hardangerfjord*. (From Voss to Eide an electric railway will soon be made.)

In three hours the train reaches *Myrdalen* station, having run for some time through ice and snow and scenery of an alpine nature. Before it arrives at Myrdalen it passes through the *Gravehalstunnel*, which is three *English* miles long and runs straight through the mountains. (The highest point of the railway is just before you reach *Finse*, a little farther east.)

From Myrdalen, driving or walking (18 kilometres) down the beautiful and most wonderful Flaam Valley (just practically opened up to the tourist by the New Railway) to Fretheim (Flaam), and from thence some hours by steamer to Balestrand, arriving there at night. But the tourist is strongly advised to enjoy the grand scenery by spending two days at the *Vatnahalsen* Hotel. From the Hotel you see the beautiful roaring Foss called *Kjosfossen*.

From Myrdalen are magnificent views amongst the grand mountains down the Flaam Valley, which is very fine and picturesque, with its river, which abounds with trout, affording the best of sport.

From Christiania, Balestrand can also be reached in one day; leaving Christiania in the early morning by the Bergen Railway to

Myrdalén Station, and from there the route just described.

Why hurry on such routes to fatigue oneself? By reference to the description of the routes one can judge what a pleasure and comfort it is to stop a day in one of the most comfortable Hotels *en route*. The Finse and Haugastøl Hotelse (see *adv.*) built by the Government on the New Railway, and leased to private keepers, are at the most astonishing heights. The Hotel at Finse could not be more comfortable, and the food is something really delightful, first-class cuisine and wines, also the view of the glaciers from your bedroom window, where one can see the effects of the glorious sunrise in the morning and enjoy it thoroughly lying in bed under the blankets. Here ought to be spent a day or two to get a full impression. The Hotel is in the hands of a British born lady, Mrs. Alice Fangen.

Balestrand, Balholm, Sogn, have two good Hotels.

"Balestrand" Hotel (Mr. N. J. Rendedal, proprietor), first-class, select hotel, two minutes' walk from the landing pier, beautifully situated on the fjord, all comforts, excellent cuisine and wines, best sanitary arrangements, baths and sea bathing, specially patronised by Norwegians, English, Germans, French and Americans, sixty-seven beds, can be thoroughly recommended for short or long visits, as it is one of the best centres for excursions by

steamer, motor, boats (sailing and rowing), good fishing, moderate prices, telephone connection. Telegraphic address—"Hotel, Balestrand, Balholm."

Regarding the Flaamsvalley from Vatnahalsen to Flaam.—The Myrdalen station lies in the very "höifjeld." From there the road goes in seventeen zig-zags down, passing the *Vatnahalsen* Hotel (some 200 yards from the road on a side-way). When the zig-zags come to an end, the road goes fairly straight downwards between 1100 feet high mountain walls alongside the river. The last 5 kilometres (the whole road being some 20 kilometres) is fairly level. The salmon go as far up in the river as to here. Above there is only trout and free fishing.

From the top of the Flaam Valley there is a magnificent view—in front, the view down the valley, and in the rear the open veldt, surrounded by snow mountains 5000 to 6000 feet high. The beauty of the landscape is also enhanced by the adjacent lovely little Reinongavand (a lake), and its fall the *Tjorsfoss*, which precipitates itself into the Flaam Valley.

In a few years an electric railway is going to be made down the valley from Myrdalen to Flaam (Fretheim).

The hotel proprietor, if asked, gives the tourist full information most willingly about any trip. He can make all arrangements for guides to the mountains, and for boats for any trip.

The hotel proprietor, Mr. N. J. Rendedal, his wife and staff of servants, show every kindness and attention; and to artists and photographers he seems to give special attention.

Balestrand district has become quite a Garden of Eden, as there is any amount of the finest roses to be got for five öre each, and any quantity of strawberries, raspberries, cherries, &c., can be bought at the hotel door.

The boating is very fine, but the stranger is advised to take a man or a boy who knows the state of the very strong currents, and the men, who are most obliging, will take you to the right places to catch the fish—haddocks, whiting, mackerel, &c.

The shooting is chiefly ptarmigan, black cock and foxes.

Balestrand is most beautifully situated, facing the Sogn Fjord, which is only 3 miles broad, to the opposite shore of *Vangsnes*. But the view is superb, to see all the little villages opposite with their red-painted houses, shining out in the sun, with a bright emerald green background of sward with fruit trees. With grand high ranges of snow clad mountains running east and west as far as the eye can see, all the way along the coast, the beauty of a sunset is a sight never to be forgotten.

Then take a view of the fine mountains just in front of the Hotel "Balestrand." Kjeipen, 4500 feet, 10 hours there and back; Monkeggen 4235 feet, 6 hours there and back; Tjugumstoten,

3570 feet, 6 hours there and back. But, to obtain a good guide is advisable, as the descents are sometimes difficult.

But the tourist who wishes a quiet rest should do all the short and most beautiful walks round Balestrand, such as along the Promenade Road to the west, visiting the English Church, dating from 1897.

It is a beautiful little church, after the style of the old "Stav" churches of Norway. Such a church deserves the support of every true English churchman.

A little further along the road we come to King Bele's Tree on the top of a mound—the tomb of King Bele—(see *Frithjof's Saga*). The confectioner, Mr. Stephens, is very kind, showing the entrance to King Bele's grave, which is on his grounds.

We then come to the villas of Mr. Johannessen (architect), and of Herr Tietz, the photographer.

Further along one sees the villa of Mr. A. Norman, one of the Norwegian artists, who is famous for his depiction of Norwegian scenery.

Then comes the villa of an American lady, Mrs. Abott.

Next we come to a very pretty old-fashioned villa with a large farm of some 60 acres,—the late Mr. Angell's private house.

Then next we see a typical Norwegian villa of Hans Dahl, a famous Norwegian artist. If one is fortunate to see Hans Dahl himself, he will gladly show his most beautiful and pleasing pictures.

A little further on you see the "Salmon Look-out."

Then we are at the "Hygea," the great "rest and be thankful," where one sits up in a tree and partakes of wine, beer, fruit, &c. of the very best. A most lovely little place.

The next beautiful little villa, in a rustic spot, which belonged lately to Mr. Kaulum, The Studio, which, when furnished, was one of the finest in Norway. A bit further, Kjellands villa.

From there the old road is a little hilly, but a very pretty road, with lovely views of its surroundings, amidst trees, bushes and ferns, and most beautifully coloured mossy rocks.

A new road has just been made below to avoid the hills. The road is finished as far as *Flesje*, where you obtain a view of a mountain foss foaming down to sea. Distance from Balholm to Flesje 3 miles, but taking it leisurely you require $2\frac{1}{2}$ to $3\frac{1}{2}$ hours there and back, allowing stopping by the way.

There are many pathways about Balestrand. A visit up to the Bale Sæter, 1500 feet, is a most beautiful walk if the weather be fine, and there the tourist is well recompensed by the lovely views all round, not to speak of a good refreshment of milk and cakes.

Ese Fjord to the North-West, starting from the Pier; the road keeps close by the side of the Fjord, where one can see the fish in the water.

The Ese Fjord seems the favourite base for

naval manœuvres, and most sheltered place for fishing, and further up, where the river comes down the Esedal, there are many sea trout to be caught.

It is a most charming walk to the Bridge. Crossing the stream a path takes you to some of the most picturesque places, where a party could enjoy the best of picnics and never be disturbed.

On the banks on either side there is abundance of parsley, oak ferns, and plenty of fox-gloves scattered amongst the fallen rocks, hazel and birch trees, not to speak of wild rose bushes, and many wild rare flower plants.

Just opposite Balholm lies *Tjugum* (about five minutes' rowing takes us to the Parish Church and the Parson's House). *Tjugum* is a peninsula ending in the *Veganæss*, where there are many fruit gardens. On the other side of *Veganesset* comes the *Fjærlandsfjord*, with its branches *Vetleffjorden* and *Sværefjorden*, which ought to be visited.

The *Fjærlandsfjord* leads to *Fjærland* (some two hours by steamer). Wild surroundings.

Balholm is so situated that it is the centre for excursions, and the tourist cannot fail to be delighted with the beautiful surroundings.

Sail to *Fjærland* (steamer every day) to see the Great Glaciers, "Bogumbræ" and "Suphellebræ."

Mundal's Hotel is good, and well adapted for the tourist. To get an impression of *Fjorland*,

the nature there and the surroundings, one must at least stop there a couple of days. (See *adv.*)

Sail to Vik, opposite the Fjord (one hour with steamer), where there are two most interesting old churches to be seen. The Hoppresktad Church is a Stav Church, built in the twelfth century. The Hove Church dates from the Viking age, and is built of stone.

A trip for a couple of days to be recommended, and which will give the voyager a good impression of the inner part of the Sognefjord and its branches, is the following:

From Balestrand to *Sogndal* by steamer (five times a week), some three hours' sailing. From *Sogndal*, driving or walking, to *Solvorn*, some 16 kilometres. The splendid road passes the well-known salmon river, the "Aaröen."

His Majesty King George V. of Great Britain and Ireland (then Prince of Wales) in 1906, when returning from *Trondhjem* from the coronation of *King Haakon* and *Queen Maud of Norway*, paid one day's visit to this river and caught a big salmon there.

This river is known as the best salmon river in Norway, especially as regards the size of the fish caught. It is a wild, rocky, short river, giving a lot of sport to anglers. It is owned by *Mr. C. H. Munthe*, who lets it to British gentlemen fishers.

Of salmon caught in this river, one by *Mr. Wilfred Kennedy* weighed 68 lbs. *Mr. Munthe*

has caught three or four still larger fish, of which, however, no exact record can be given. *Mr. J. G. Wulfsberg* caught in this river a salmon of 64 lbs.

The road leads through pine-forests, alongside the rocky and wild river, with its many waterfalls ("Helvedesfoss" and "Futespranget") to the *Hafslo* village, situated on the one side of the beautiful *Hafslo lake* with its splendid trout-fishing. (Permission to fish is liberally given by the farmers, if asked). A boat-trip on the beautiful lake, with its small islands framed by pine-forests, is much to be recommended. *Hafslo* is an inland place some 600 Norwegian feet above the sea. Good hotel at *Hillestad*. From *Hafslo* (*Hillestad*) down hill to *Solvorn* on the *Lysterfjord*, 5 kilometres. Across the fjord *Urnæs*, with the oldest Stav Church in Norway. From *Solvorn* back to *Balestrand* by steamer.

Instead of going from *Hafslo* to *Solvorn* one may go from *Hafslo* up to the *Veilestrands lake* (a little higher than the *Hafslo lake*). The lake has very wild surroundings, is 14 kilometres long, and very deep, and full of good sized trout. (Free fishing.) There is a motor-boat running twice a day (once in each direction). From the end of the lake one can walk over the glacier (guide must be had) to the *Suphelledalen* on the *Fjærlandsfjord*—not far from *Balestrand*. Bad road, and rather tiring walking; but a very interesting tour.

The described route may of course be taken

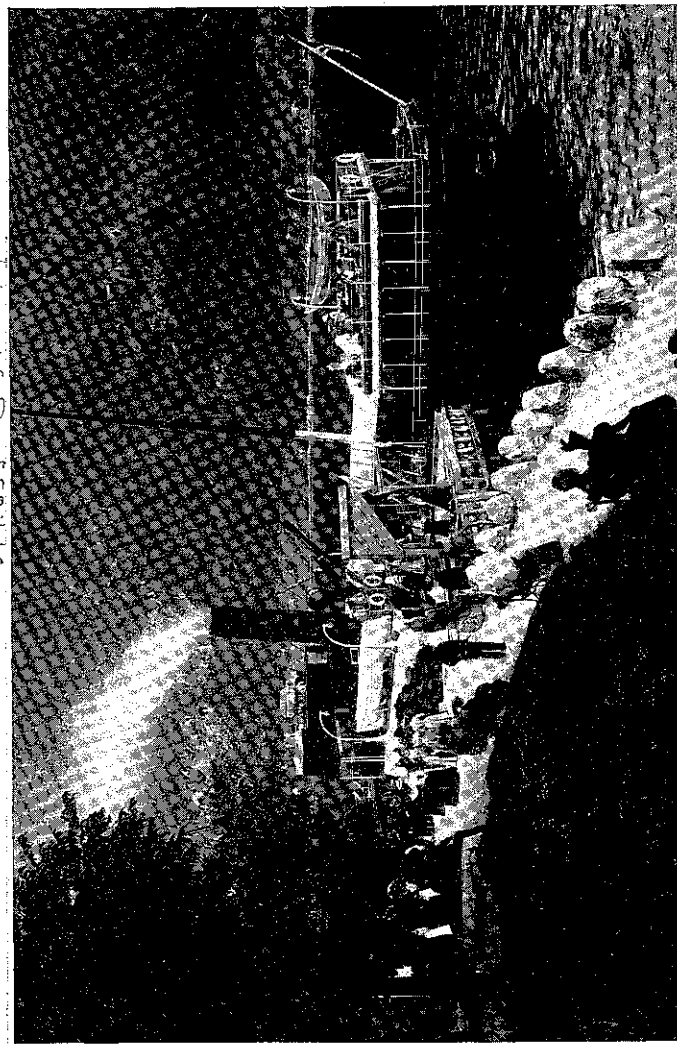
quite as well (perhaps even better) *vice versa* (from Balestrand to Fjærland over the glacier to Veitestranden, and from there to Hafslo and Sogndal, and back to Balestrand by steamer).

There are hotels at Sogndal and Solvorn, and also at Hillestad.

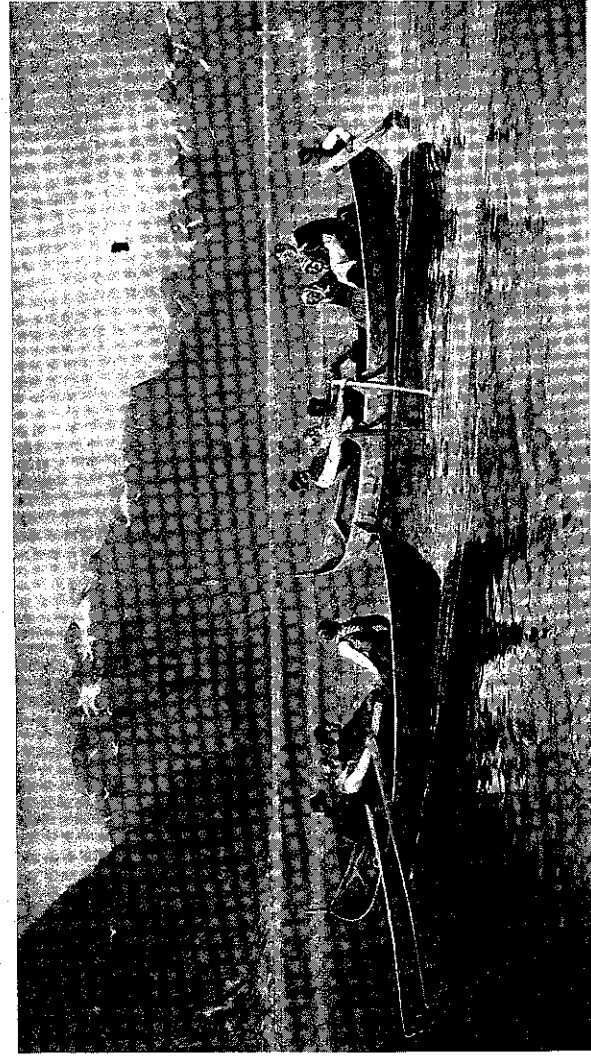
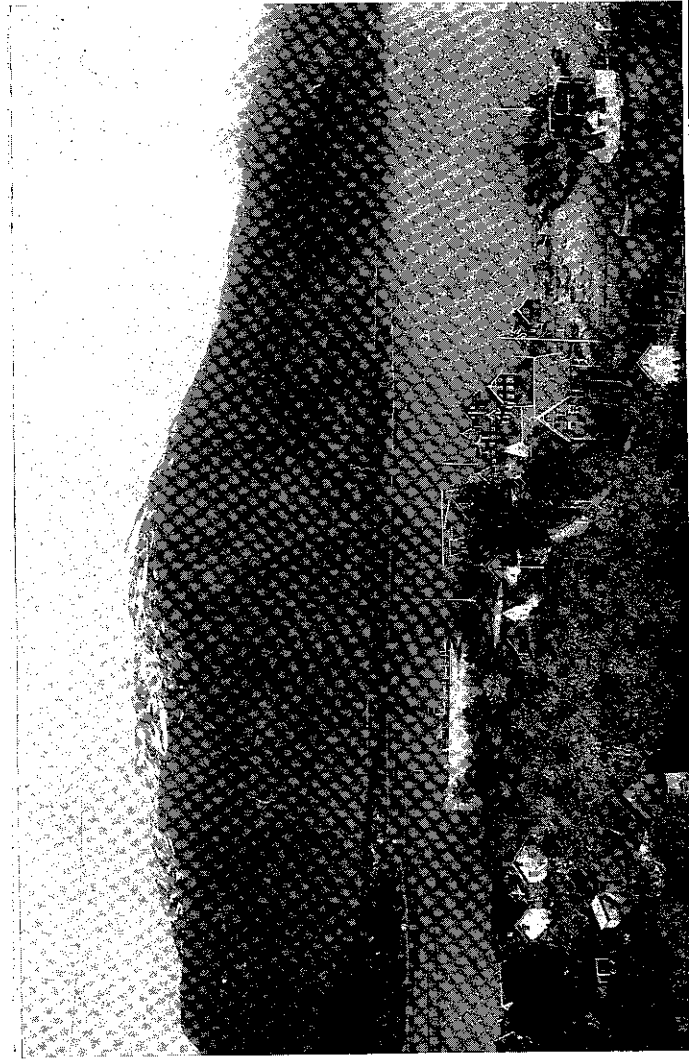
Instead of going from Hafslo to Solvorn one may go from Hafslo to *Marifjæren* (8 kilometres) down hill, and there board the steamer at Marifjæren back. At *Marifjæren* there is a good hotel. A new road will lead further from Marifjæren to Lyster.

There are several other trips that may be taken. People with interests in history and old things from former days should see the "Sogns Folkemuseum" (museum of old things found and gathered in Sogn) at *Amble*. (Sail from Balestrand with the steamer.)

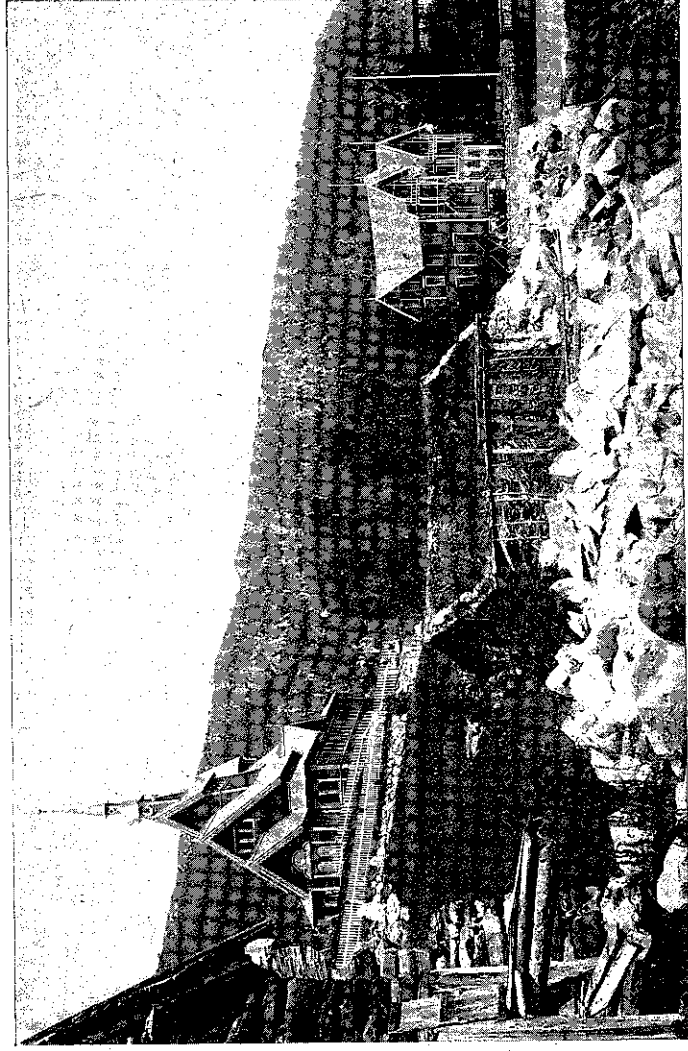
From *Lærdal* there is an overland way to Christiania through *Valders* (splendid road and beautiful nature). This way was very much used before the Bergen-Christiania railway was finished. There is now motor cars running, besides horses and carriages. From this route a side way leads to the *Jotunheimen*, the highest and wildest mountains in all Norway.



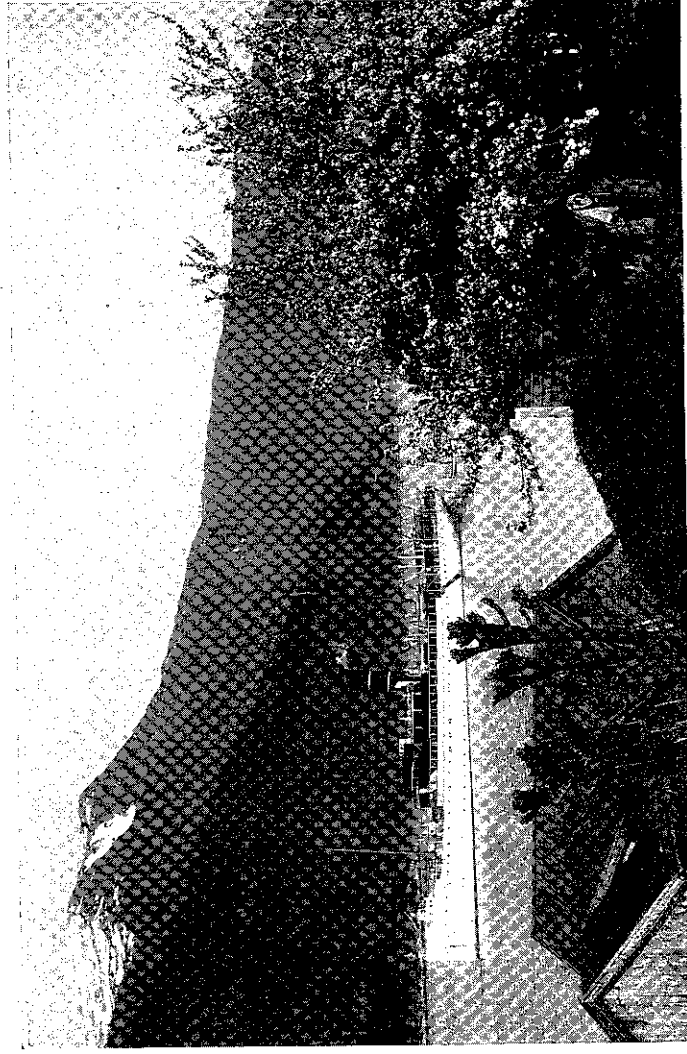
LANDING STAGE, BALHOLM.



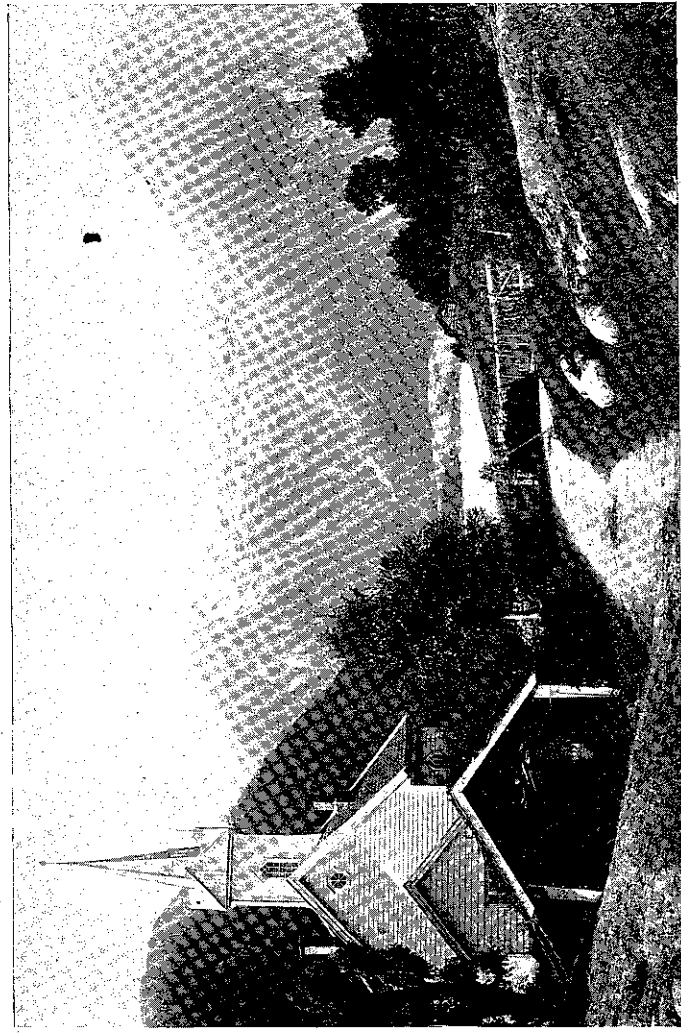
BALESTRAND—LAKE SCENE.



INGEBORG.



ESSELIORD GERMAN WARSHIP.



TYNGUM CHURCH.



BOJUMSERAE GLACIER.

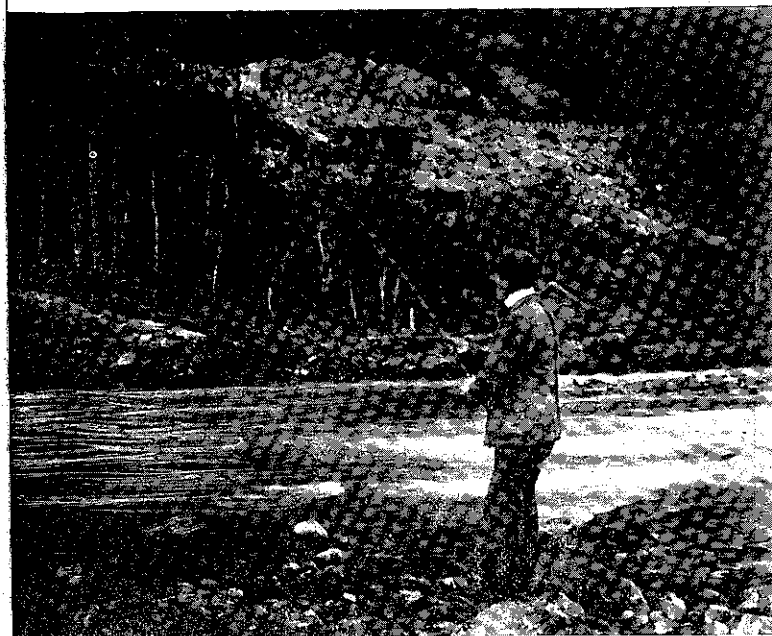
42



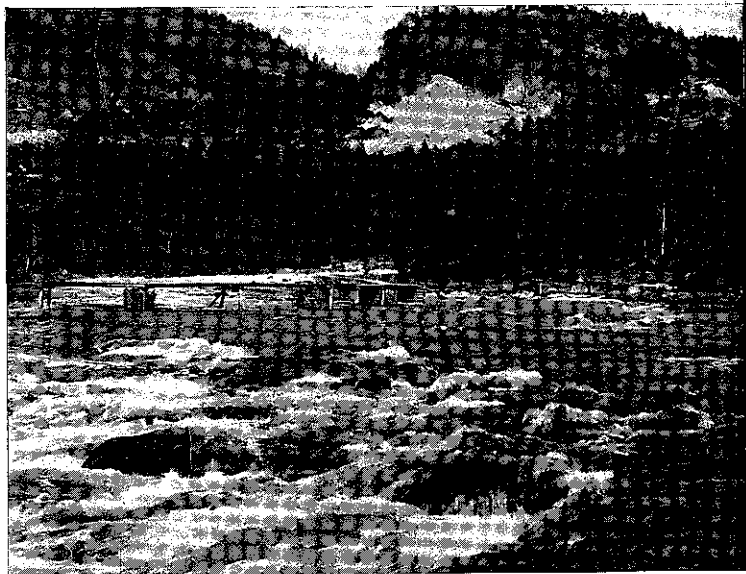
ON THE AAROEN RIVER, SOGN.



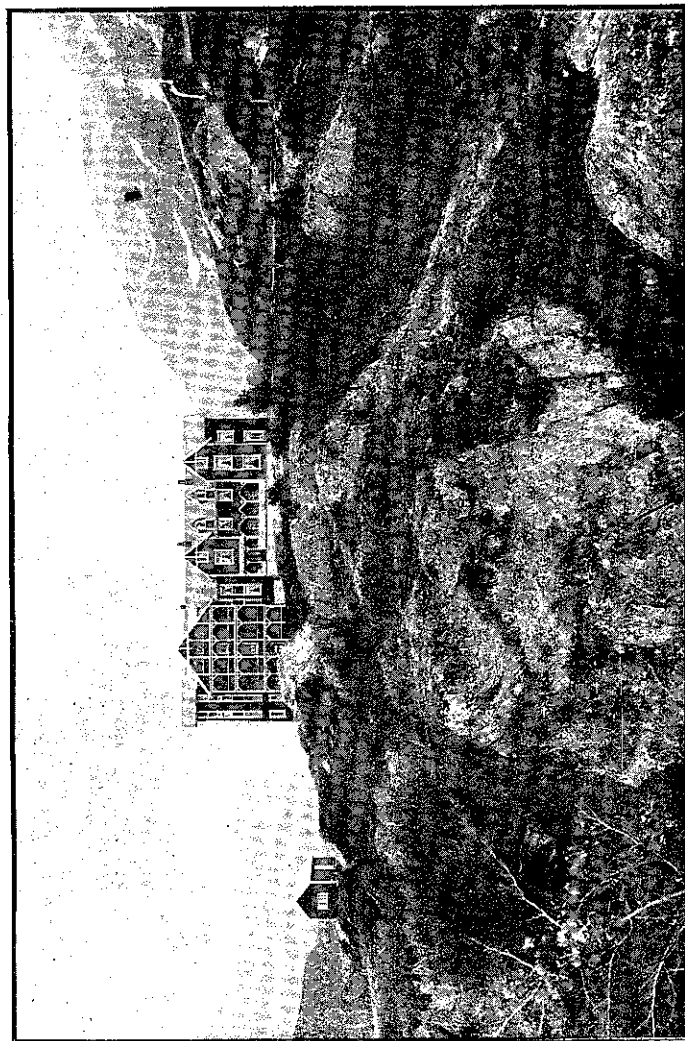
ON THE AAROEN RIVER, SOGN.



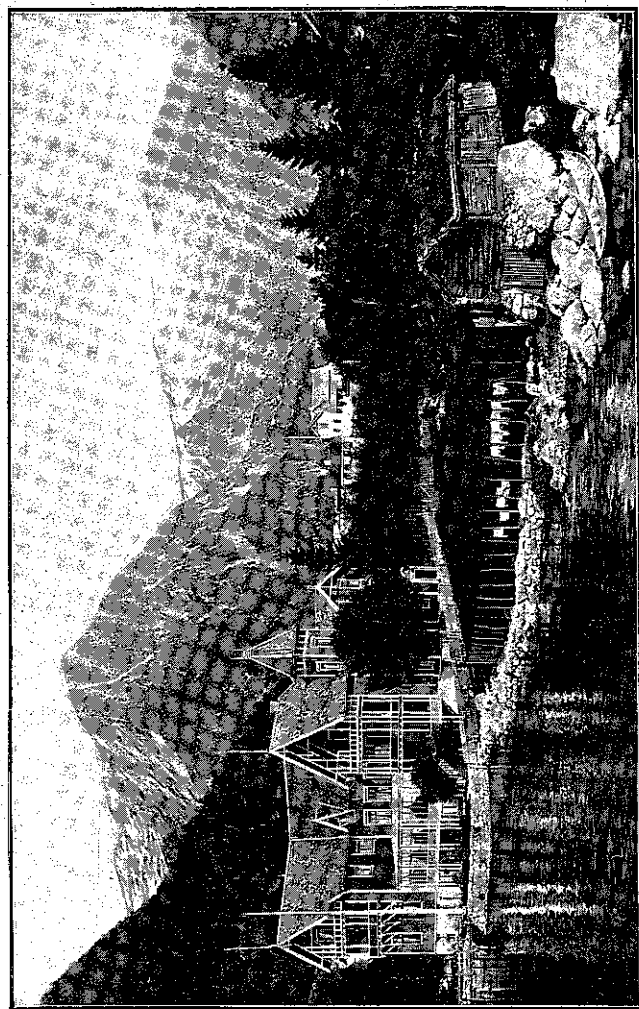
ON THE AAROEN RIVER, SOGN.



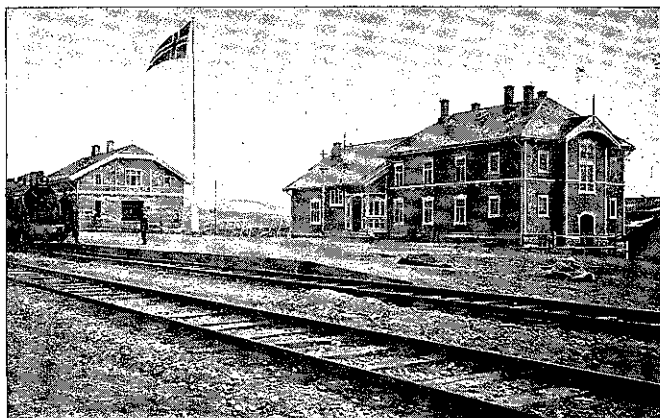
ON THE AAROEN RIVER, SOGN.



VATNAHALSEN HOTEL.



NORWEGIAN STATE RAILWAYS.



(FINSE, the highest Station on the Bergen Railway,
4009 feet above the sea-level.)

THE BERGEN RAILWAY

Quickest and most convenient Route between the
East of Norway and the West-Coast. Kristiania-
Bergen or *vici versa* in 14 hours.

DINING CARS IN THE FAST TRAINS.

Great facilities for varied Circular Tours in connection
with the Steamers on the Hardangerfjord, Sognefjord, &c.

For information and Illustrated Pamphlets apply to—

NORWEGIAN STATE RAILWAYS,
KRISTIANIA.

Telegraphic Address:
BENNETT.

NORWAY.

AGENCIES AT ALL
CENTRES.

BENNETT'S TOURIST OFFICE.

STAVANGER. TRONDHJEM.

Chief Office for Western Norway: BERGEN.

Head Office: CHRISTIANIA.

Established 1850.

Engage your North Cape Berths through BENNETT'S, being on the
spot they are in a position to secure the best.

FOR 35 YEARS THE ONLY TOURIST OFFICE IN NORWAY.

Write for Information. No Fees.

TRAVEL DEPARTMENT.

Every information furnished relative to travelling in Norway,
shooting, fishing, &c. Money exchanged. Independent Tours planned
with a special view to suite individual taste, making the best use of time,
arranging the closest correspondence with steamers and trains at all
connecting points, and selecting the best sleeping quarters. Useful
hints given. Excursions arranged. Estimates of travelling expenses
furnished. Letters forwarded. Luggage warehoused or despatched.
Berths secured. Rooms at Hotels engaged.

Travelling and Hotel Coupons issued to all parts of Norway and Sweden.

"Bennett's" are Ticket Agents for the North Cape Steamers, the
principal Norwegian Coasting, Fjord, and Lake Steamers, the Nor-
wegian and Swedish State Railways, and the Government Diligences.
Also Agents for the Norwegian Tourist Club.

BEFORE PURCHASING SOUVENIRS be sure to visit
Bennett's Photograph and Curiosity Stores.

Unrivalled Stook of Photos, Silver, Furs, Fancy Articles, &c.

